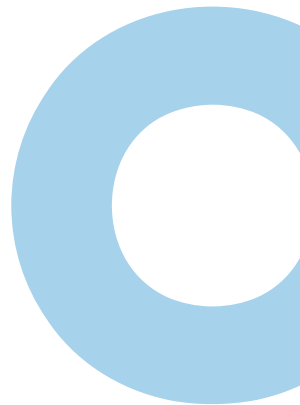


Korea Maritime & Ocean University

Guideline for International Students



Undergraduate School

College of Maritime Sciences

Div. of Navigation Convergence Studies

Shipping Operations Management
Maritime Law and Marine Insurance
Maritime Safety
Intelligent Navigation Systems
Global Maritime Studies

Div. of Marine System Engineering

Green Ship Technology
Smart Ship Technology
Marine Engine and Advanced Materials

Div. of Coast Guard Studies

Navigation
Engineering

Div. of Maritime AI & Cyber Security

AI
Cyber Security

College of Maritime Humanities & Social Sciences

Div. of Shipping Management

Shipping Management
Shipping Management Information Systems and Finance

Div. of Maritime Law

Law
Maritime Law

Div. of International Trade and Economics

International Trade
Economics and Finance

Dept. of International Relations

Dept. of Public Maritime Administration

Dept. of English Language and Literature

Dept. of East Asian Studies

College of Ocean Science and Engineering

Div. of Naval Architecture and Ocean Systems Engineering

Dept. of Ocean Engineering

Dept. of Energy & Resources Engineering

Dept. of Oceanic Architectural Engineering

Div. of Convergence on Marine Science

Marine Ocean Science
Marine Biotechnology
Aquatic BioScience

Dept. of Marine Sport Sciences

Div. of Mechanical Engineering

Mechanical Systems Engineering
Refrigeration and Air-Conditioning Engineering

Div. of Electronics and Electrical Information Engineering

Electrical and Electronics Engineering
Electronics and Communications Engineering
Nano-Semiconductor Engineering
Radio Mobility Convergence Engineering
Data Science

Div. of Artificial Intelligence Engineering

Intelligent Control Systems Engineering
Computer Engineering

Dept. of Logistics System Engineering

Dept. of Environmental Engineering

Dept. of Civil Engineering

Dept. of Ocean Advanced Materials Convergence Engineering



Graduate School

• Master's and Doctoral Programs •

Engineering

Dept. of Maritime Law & Policy

Maritime Law
Maritime Policy

Dept. of Marine Systems Engineering

Machine and Materials Engineering
Ship Machinery-Energy Systems Engineering
Ship Electrics and Electronics Control Engineering

Dept. of Navigation Science

Maritime Safety Technology
Maritime Traffic Information

Dept. of Marine Engineering

Mechanical Fusion & Material Engineering
Green Ship Technology
Mechatronics Engineering

Dept. of Coast Guard Studies

Maritime Police Administration
Maritime Safety & Environment

Dept. of Maritime AI & Cyber Security

Offshore Plant Management
Maritime AI and Humanities
Maritime Cyber Security

Dept. of Marine Information Technology

Smart Systems Engineering
Information Technology Engineering

Dept. of Mechanical Engineering

Dept. of Naval Architecture and Ocean Systems Engineering

Dept. of Electronics and Communications Engineering

Dept. of Ocean Engineering

Dept. of Ocean Energy and Resources Engineering

Energy and Resource Engineering
Ocean Energy Engineering

Dept. of Logistics

Dept. of Control and Instrumentation Engineering

Dept. of Advanced Materials Convergence Engineering

Dept. of Refrigeration and Air-Conditioning Engineering

Dept. of Electrical and Electronics Engineering

Dept. of Radio Communication Engineering

Dept. of Civil Engineering

Dept. of Environmental Engineering

Dept. of Computer Engineering

Dept. of Nano-Semiconductor Engineering

Dept. of Oceanic Architectural Engineering

Architectural Design
Disaster Prevention of Offshore Structures

Dept. of Convergence Interdisciplinary Education of Maritime & Ocean Contents

Convergence of Maritime & Ocean City Design
Logistics System

Engineering

Dept. of Advanced Ship Management Convergence

Advanced Ship Operations Management
Advanced Ship Technology Management

Natural Sciences

Dept. of Data Informatics

Dept. of Marine BioScience and Environment

Marine Biotechnology
Marine Environmental Science
Aquatic BioScience

Dept. of Convergence Interdisciplinary Education of Maritime & Ocean Contents

Maritime & Ocean Biotechnology

Humanities & Social Sciences

Dept. of Shipping Management

Dept. of Maritime Law

Private Law
Public Law
Maritime Law

Dept. of Maritime Economics

International Trade
Economics

Dept. of English Language and Literature

English Linguistics
English Literature

Dept. of Public Policy

International Policy
Maritime Administration

Dept. of International Area & Cultural Studies

East Asian Studies
Maritime History and Culture
Cultural Interaction Studies

Dept. of Convergence Interdisciplinary Education of Maritime & Ocean Contents

Convergence of Maritime & Ocean Culture-Contents

Arts & Sports

Dept. of Sports Convergence

Marine Leisure Industry
Sports Medicine
Ocean Safety (Master's only)

Dept. of Convergence Interdisciplinary Education of Maritime & Ocean Contents

Maritime & Ocean Health Care

A Globally Prestigious University Specialized in the World of Seas



• Introduction:

Nestled on Jodo Island, in Busan, South Korea's second-largest city and largest port, Korea Maritime & Ocean University (KMOU) is a beacon of maritime excellence with a rich history dating back to 1919. Our journey began as the Jinhae Advanced Maritime Training Institute, and we were established as the first national university after Korea's liberation in 1945. Over the years, we have evolved into a comprehensive university dedicated to advancing maritime and ocean-related studies.

• A Legacy of Maritime Leadership:

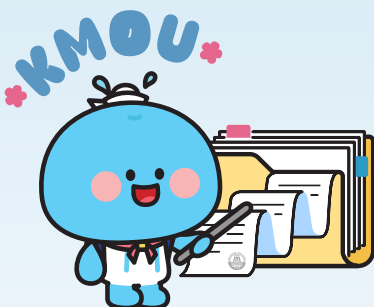
KMOU is a leading university in South Korea specializing in maritime affairs. We are dedicated to training the next generation of global ocean leaders, driving advanced research, and fostering collaboration between academia and industry. Our university has played a pivotal role in propelling South Korea to become a top 10 maritime power globally. We are committed to pushing the boundaries of maritime science and ensuring a sustainable future for the world's oceans.

• Vision for the Future:

KMOU is poised for continued growth and development, aiming to be a world-class research-oriented university. We envision ourselves as a guiding institution, leading the way in the new era of oceans, actively participating in government programs and serving as a vital think tank for maritime issues.



- ✔ Selected as 'A university for the Global Korea Scholarship (GKS) Degree Course'
- ✔ IEQAS(International Education Quality Assurance System) Certified University by the Ministry of Education
- ✔ Selected as a 'GKS ASEAN National University Student Invitation Training Institution'
- ✔ Selected as an operating institute for 'Global Maritime and Fisheries University Students Invitation Training'
- ✔ Selected for the 'Campus Asia AIMS' Project with ASEAN National Universities



Established in
1945

relatively lower tuition fees
compared to the public
universities in South Korea



No. **4**

relatively lower tuition fees
compared to the public
universities in South Korea



2.78
million won

average amount of
annual scholarship
grant per student



75.8 %

the percentage of
the 2023 graduates
who found a job



Degree Course Admission

▶ Application Process



▶ Admission Info.

Item		Key contents
Under-graduate School	Nationality and Educational Requirements	Applicant must be a high school graduate (or expected to graduate from high school) Applicant, and his/her parents all must be foreigners.
	Language Requirement	Grade 3 in TOPIK or completed a Korean language course in a university with level 3 or higher.
	Submission of Application	<ul style="list-style-type: none"> December or January next year (admission for March of the following year) How to submit your applications: Via the Internet (www.studyinkorea.go.kr) ※ If there is a call for application for additional openings: Submission of applications in January next year (to be followed by interviews)
	Selection Method	Interview
Graduate School	Nationality and Educational Requirements	A foreigner who completed educational programs which are equivalent to South Korea's elementary school, middle school, high school, and undergraduate school. <ul style="list-style-type: none"> Master Degree: A (expected) holder of a bachelor's degree from a four-year university in South Korea or other countries Doctor Degree: A (expected) holder of a master's degree from a university in South Korea or other countries or whose degree is pending
	Language Requirement	<ul style="list-style-type: none"> To meet one of the following requirements - TOEFL iBT 68 points, TOEIC 600 points, TEPS 279 points, IELTS 5.5 points, or TOPIK Grade 3 ※ A student with a recommendation from his/her future advising professor can apply even without the above-mentioned language scores.
	Submission of Application	<ul style="list-style-type: none"> 1st round of submission (admission for March): November through December 2nd round of submission (admission for September): May through June
	Selection Method	Documentary Screening

* The final binding conditions and requirements for admissions shall be as per the application guideline of the year.

International Students Support Programs



1 Korean Cultural Experience Program
 2 Taekwondo Experience
 3 International Students' Career and Job Program
 4 International Students' Day
 5 KMOU BUDDY and Mentoring Program
 6 KMOU Global Cultural Experience
 7 Allowance for students with a TOPIK grade
 8 Freshmen Orientation and Early Adaptation Program



Scholarships for International Students

Course	Item	Scholarship Program	Eligibility	Amount of Scholarship	
Under-graduate School	Freshmen (The first semester after entry)	Entry Scholarship A	TOPIK Grade 4 ~ 6 or TOEFL iBT 80 ~ 100 or higher or IELTS Band 6.0 ~ 7.0 or higher	40% ~ 100% of the tuition	
		Entry Scholarship B	Freshmen who have completed at least two semesters of Korean language programs in KMOU, with TOPIK grade 3 or higher and recommendation by the Dean of Office of International Affairs	20% of the tuition	
	Existing students	International Students Scholarship	[Common Criteria] - Students who took 12 credits or more in the last semester without any Fs in any courses - TOPIK Grade 4 or higher	[Grade Criteria] Average GPA in the last semester 2.0 ~ 3.8 or higher	40% ~ 100% of the tuition
Graduate School	Freshmen (The first semester after entry)	Entry Scholarship A	TOPIK Grade 4 ~ 6 or TOEFL iBT 80 ~ 100 or higher or IELTS Band 6.0 ~ 7.0 or higher	The scholarship is to be provided within the limit of the budget	
		Entry Scholarship B	Recruits who have completed at least two semesters of Korean language programs of our institution, with TOPIK grade 3 or higher and recommendation by the Dean of Office of International Exchange Center		
	Existing students	International Students Scholarship	[Common Criteria] Students who took at least 6 credits in the last semester with an average grade of 4.0 or higher (No courses with a C or lower)		[Language Requirements] TOPIK Grade 4 ~ 6 or TOEFL iBT 80 ~ 100
		Academic Excellence Scholarship	Students with outstanding grades, without exceeding the limitation for the years of enlistment		Partial scholarship (within the budget of the year)

* Note: Recipients of Supervising Professor Scholarship are excluded from these scholarships



Global Korea Scholarship (GKS) Program

- 1. Eligibility:** Undergraduate students or graduate students(master's/doctoral programs) who applied for KMOU
- 2. Application period:** One year for Korean language training + four years in the undergraduate program, two years for the master's degree program, three years for the doctoral program
- 3. Admission process**
 - University Track** 1st Round of Selection (Application submitted to the university and recommendations made) ⇒ 2nd Round of Selection (Selection by the NIIED) ⇒ Final pass
 - Embassy Track** 1st Round of Selection (Public application submitted to the college and recommendations made) ⇒ 2nd Round of Selection (Selection by the NIIED and the college) ⇒ Final pass
- 4. Scholarship:** Covers the living expenses and tuition fees during studying in Korea



Tuition

Undergraduate School (per semester)

2,248,000 KRW College of Maritime Sciences (Natural Sciences)	2,248,000 KRW College of Ocean Science and Engineering (Natural Sciences)	2,147,000 KRW College of Ocean Science and Engineering (Science and Art, Sports)	1,792,000 KRW College of Maritime Humanities & Social Sciences (Humanities and Social Studies)
--	--	---	---

Graduate School (per semester)

2,754,500 KRW Engineering	2,629,500 KRW Science	2,629,500 KRW Arts and Sports	2,172,500 KRW Humanities and Social Sciences
------------------------------	--------------------------	----------------------------------	---

* The final binding conditions and requirements for admissions shall be as per the application guideline of the year.



KMOU Korean Language Institute

1. Program Overview

- ◆ **Semesters:** March, June, September, December (4 intakes per year, 10 - week courses)
- ◆ **Curriculum:** Intensive training in speaking, listening, writing, reading, and grammar
- ◆ **Special Feature:** Korean cultural experience activities offered each semester

2. Admission Process: Submit application documents (3 months before semester start) ⇒ Document review

⇒ Interview ⇒ Announcement of qualified students ⇒ Tuition payment ⇒ Issuance of admission letter ⇒ Visa application ⇒ Entry into South Korea

3. Scholarship Opportunities

- ◆ **Academic Excellence Scholarship for current students:** 5 - 20% tuition support for top 30% performers
- ◆ **Entrance Scholarship for freshmen:** 10 - 20% first semester tuition support based on TOPIK scores

4. Cost Information

- ◆ **Tuition:** 1,200,000 KRW (per semester)
- ◆ **Dormitory fee:** 5,000 KRW (per day)
- ◆ **Admission fee:** 100,000 KRW (one-time)

5. Our KLI Facilities



¹ Korean language classroom

² Dorm room (for four tenants)

³ Dorm room (for two tenants)

Dormitory



- A-chi Hall (for graduate students only) **dorm fees for a semester** | approx. 1,345,000 KRW ~ 1,748,000 KRW One-person room
- Ara Hall, Hyecho Hall (studio type) **dorm fees for a semester** | approx. 1,083,000 KRW ~ 1,682,000 KRW Two-person room

※ Dorm fees include utilities, administration fees, and meals. (As per the final confirmed dormitory fees of the year)

Famous Tourist Spots of **Busan**



How to **Reach Us**



by **PLANE**

50
mins



by **KTX**

2:30
hrs mins

Inquiries

Undergraduate Admission | +82-51-410-5176 | iadm@kmou.ac.kr

Graduate Admission | +82-51-410-5120 | graduate@kmou.ac.kr

Korean Language Institute | +82-51-410-4774 | kmoukli@kmou.ac.kr



KMOU
Promotional
video



KMOU
International
student stories



Office of International Affairs, Korea Maritime & Ocean University,
727, Taejong-ro, Yeongdo-gu, Busan (Dongsam-dong) Postal Code: 49112
<http://www.kmou.ac.kr/global/main.do>